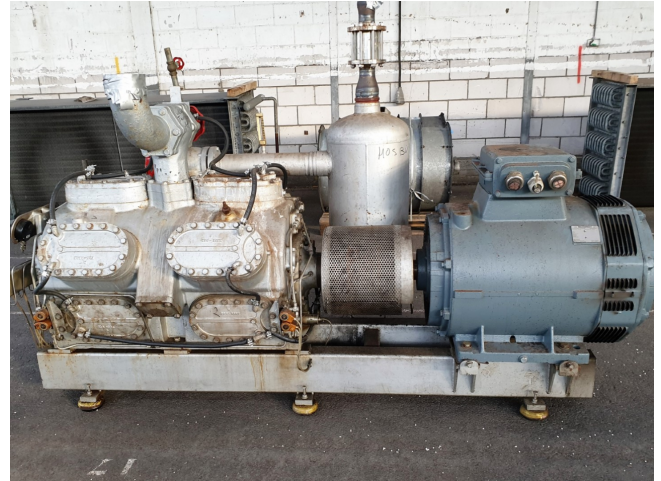


Sabroe SMC 112 L MK2

Specifications

Brand	Sabroe
Type	SMC 112 L MK2
Refrigerant	NH 3 (ammonia)
kW at +10°C/+40°C	1082
kW at 0°C/+40°C	715,1
kW at -5°C/+40°C	569,0
kW at -10°C/+40°C	444,6
Electromotor Specs	Schorch 50Hz / 160 kW / 1489 RPM
Capacity Control	✓
On steel base frame	✓
Pressure safety switches	✓
Hp/Lp/Op	
Pressure gauges	✓
Hp/Lp/Op	
Oil separator	✓
m3 / h	821
Sizes	2800x100x1850 mm
Stock	1



Description

Used Sabroe SMC 112 L MK2

Used Sabroe SMC 112 L compressor direct driven. Complete with electromotor Schorch 50 Hz - 160 kW - 1489 RPM. Oil separator 115 ltr. Pressure safety switches and gauges.
 *Why choose for HOSBV? Were not only the largest used refrigeration specialist in Europe, but also, we deliver all equipment including an extensive test, warranty and industrial cleaning.
 *Optional we can also arrange the logistics.

